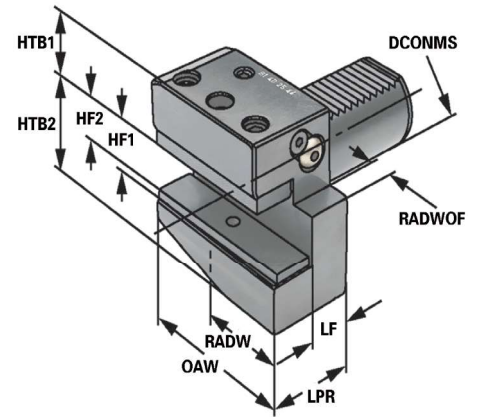




Verwendung:
Vorwiegend für Außenbearbeitung.
Zum Plan Einstechen.

Application:
Mainly for external machining.
For face machining.

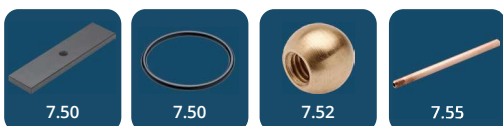
Application:
Principalement pour usinage extérieur.
Pour carottage.



| Bestell-Nr. Order no. Référence | Abmessung Size Dimension | DCONMS | HF1 | HF2 | LPR | LF | OAW | RADW | RADWOF | HTB1 | HTB2 |
|---------------------------------------|--------------------------------|--------|------|------|-----|----|-----|------|--------|------|------|
| 169.31.12 | B1 – 16 × 12 × 24 | 16 | 12 | – | 24 | 13 | 42 | 23 | 5 | 20 | 22 |
| 209.31.16 | B1 – 20 × 16 × 30 | 20 | 16 | 12 | 30 | 16 | 55 | 30 | 7 | 25 | 30 |
| 259.31.16 | B1 – 25 × 16 × 30 | 25 | 16 | 12 | 30 | 16 | 55 | 30 | 7 | 25 | 30 |
| 309.31.20 | B1 – 30 × 20 × 40 | 30 | 24,5 | 20,5 | 40 | 22 | 70 | 35 | 10 | 23,5 | 42,5 |
| 409.31.25 | B1 – 40 × 25 × 44 | 40 | 28 | 23 | 44 | 22 | 85 | 42,5 | 12,5 | 30 | 50 |
| 509.31.32 | B1 – 50 × 32 × 55 | 50 | 33 | 26 | 55 | 30 | 100 | 50 | 16 | 35 | 60 |

Ausführung: Mit einstellbarer Kugelspritzdüse und Unterlegplatte
Version: With adjustable spray nozzle and shim
Version: Avec gicleur ajustable et semelle

7



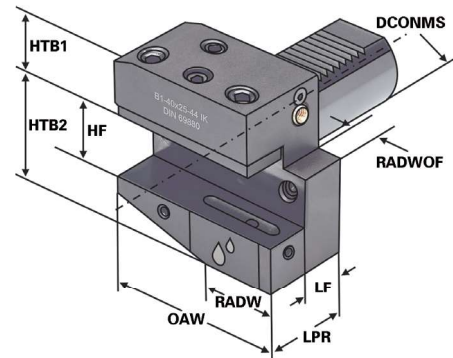
Radial toolholders form B1 right, short - for tools with internal coolant
 Porte-outils radials forme B1 droite, pour - outils avec arrosage interne



Verwendung:
 Vorwiegend für Außenbearbeitung.
 Zum Plan Einstechen.

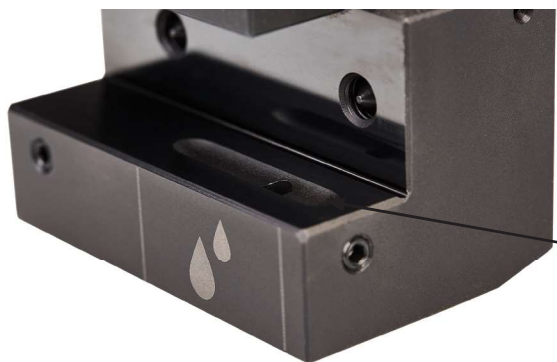
Application:
 Mainly for external machining.
 For face machining.

Application:
 Principalement pour usinage extérieur.
 Pour carottage.



| Bestell-Nr. Order no. Référence | Abmessung Size Dimension | DCONMS | HF | LPR | LF | OAW | RADW | RADWOF | HTB1 | HTB2 |
|---------------------------------------|--------------------------------|--------|----|-----|----|-----|------|--------|------|------|
| 309.31.20.IK | B1 – 30 × 20 × 40 | 30 | 20 | 40 | 22 | 70 | 35 | 10 | 28 | 38 |
| 409.31.25.IK | B1 – 40 × 25 × 44 | 40 | 25 | 44 | 22 | 85 | 42,5 | 12,5 | 32,5 | 48 |
| 509.31.32.IK | B1 – 50 × 32 × 55 | 50 | 32 | 55 | 30 | 100 | 50 | 16 | 35 | 60 |

Ausführung: Mit einstellbarer Kugelspritzdüse
Version: With adjustable spray nozzle
Version: Avec gicleur ajustable



Übergabe für Kühlmittel
 Coolant supply
 Jonction d'arrosage

